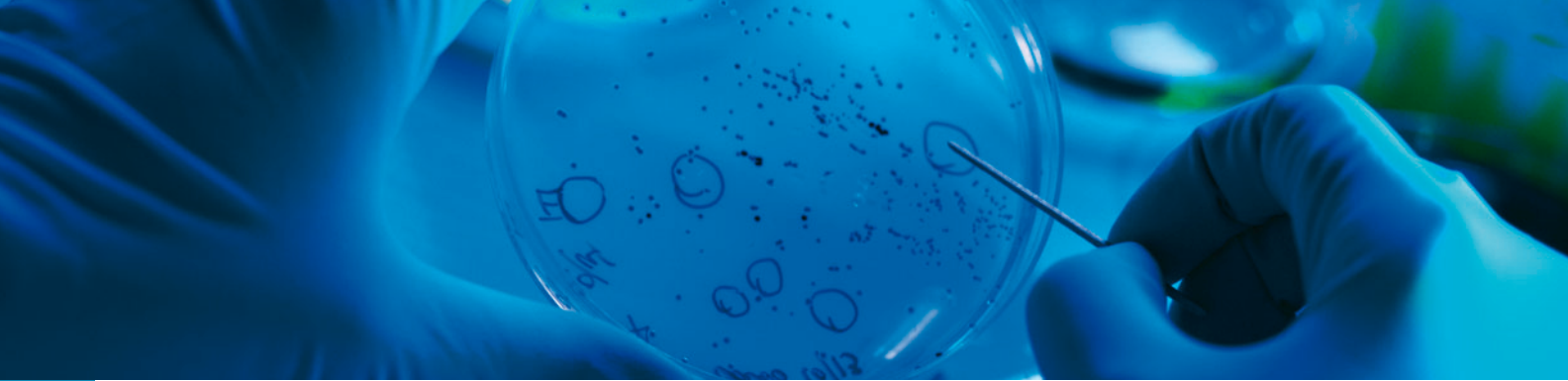


Thermo Scientific Forma Environmental Chambers

Controlled Temperature Storage Solutions



A Choice of Environmental Chambers to Meet Your Specific Needs

From stability testing to cell culturing, from CO₂, RH, and refrigeration control to temperature-only, from 11.0 to 29.0 cu. ft., we're your supplier for environmental chambers. Thermo Scientific Forma environmental chambers are built to last and will meet your needs now and in the future.

Do you require a high precision cabinet to meet ICH, FDA, TAPPI, ASTM or national testing standards? Our 3920/3940/3911 Series is the ideal choice.

- Optimum uniformity and a wide temperature range for easy compliance with regulatory requirements.
- Rugged construction and durable shelving for long life.
- Broad range of options to create the perfect fit for your applications.

Consider our Model 3960 (3961) Reach-In Incubator/ Environmental Chamber if you are focused on elevated temperature-only segments of drug stability and culture.

- Optimum uniformity and an elevated temperature range for easy compliance with regulatory requirements.
- Rugged construction and durable shelving for long life.
- Valuable features for flexibility and cost-effectiveness.

At-A-Glance Chamber Comparison

Type	Model	Temp Range	Uniformity	RH	Size (Cu. Ft.)	CO ₂	Lights
Stability	3940 (3949)	0°C TO 60°C	±0.3°C @ 25°C to 37°C	Above ambient to 95% @ 37°C	29.0	Optional	Optional*
	3920	0°C TO 60°C	±0.3°C @ 25°C to 37°C	N/A	29.0	Optional	Optional*
	3911 (3913)	0°C TO 60°C	±0.3°C @ 25°C to 37°C	Above ambient to 95% @ 37°C	11.0	Optional	N/A
	3960 (3961)	5°C above ambient to 60°C	±0.4°C @ 30°C ±0.3°C @ 37°C ±0.5°C @ 45°C	N/A	29.0	N/A	Optional*

*Lights (Cat. No. 190032) do not meet ICH guidelines. Lights void UL Listing and CE Mark on Model 3960 (3961).

3920/3940/3911 Series Stability Chambers for a Multitude of Applications

This series of environmental chambers meets International Conference on Harmonization (ICH) guidelines for drug substance and product storage testing. The units are ideal for drug stability studies, shelf life testing for packaged products, and insect and other large-scale biological research.

Optimum uniformity and a wide temperature range for easy compliance with regulatory requirements

These chambers feature a 0°C to 60°C (32°F to 140°F) temperature range that can be set in 0.1°C increments. The broad temperature range, and optimum temperature uniformity and recovery contribute to an ideal test environment, even when the chamber contains large product loads and low output, heat-generating equipment.

Advantages of our directed horizontal laminar airflow system

Our directed airflow system (shown below) promotes an ideal growth environment. The enhanced design includes a positive pressure feed plenum on the right side of the

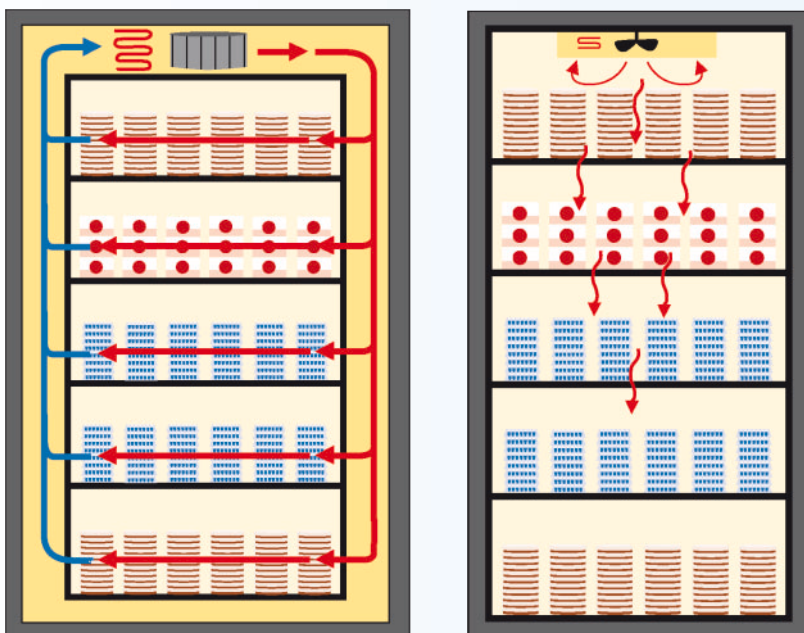
chamber and a negative pressure return plenum on the left to distribute the airflow uniformly throughout the chamber.

This combination directs air across the surface of each solid shelf. Even when filled with samples or equipment, each shelf receives a consistent flow of conditioned air for optimum temperature uniformity and recovery.

As opposed to our horizontal airflow system, top-to-bottom (non-directed) airflow systems use a top-mounted fan to push air down through wire shelves.

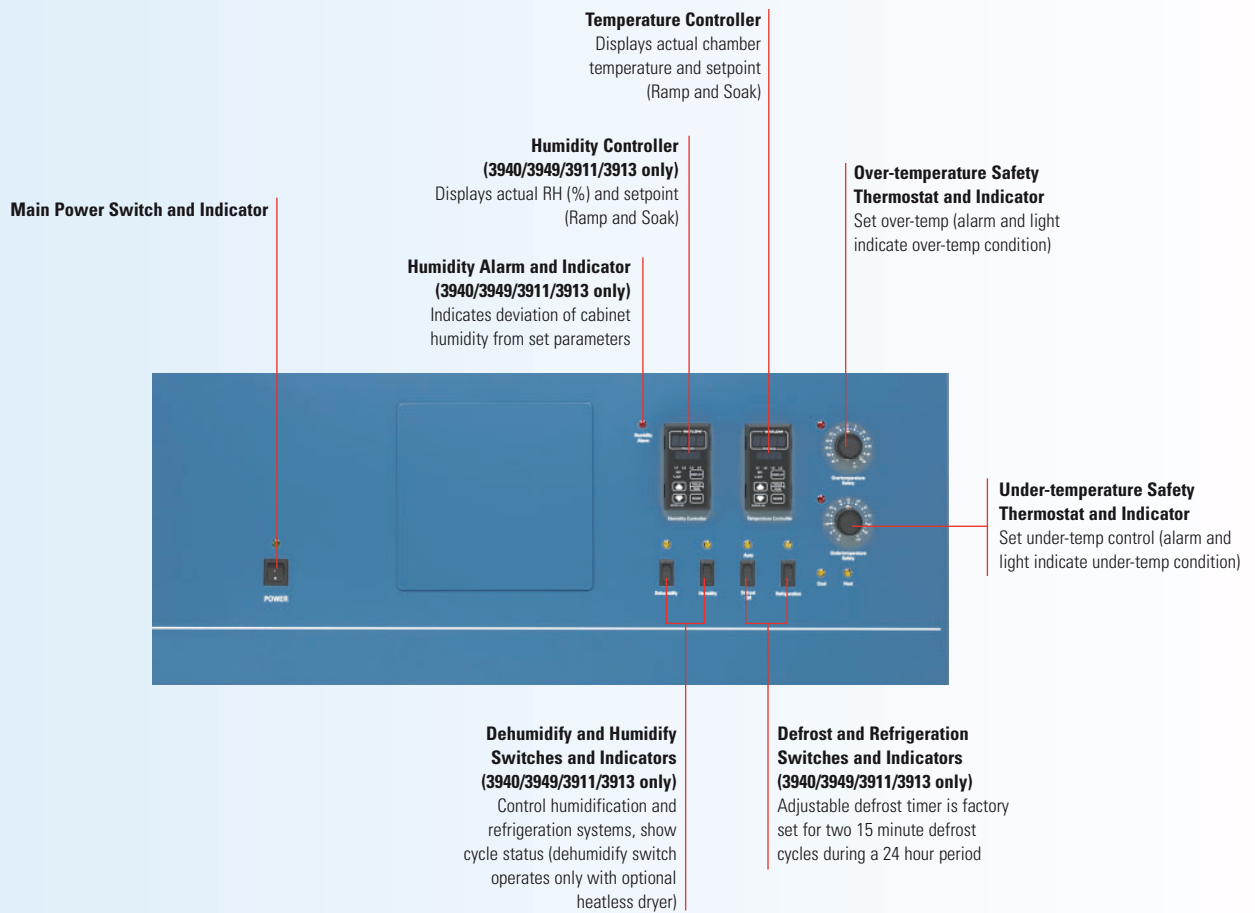
Temperature uniformity and recovery can deteriorate quickly when shelves are filled because air movement is blocked. That variation in temperature, alone or when combined with frequent door openings, may compromise environmental conditions or make process validation difficult.

Standard 4 to 20 milliamp output connects to most alarm/monitoring systems, allowing you to meet internal and regulatory product documentation requirements. Chart recorders are also available.



The Thermo Scientific directed airflow design (left) versus a top-to-bottom, undirected airflow design (right).

The directed airflow minimizes the risk of product desiccation and loss, and wasted time and money due to poor temperature uniformity and recovery.



Rugged construction and durable shelving for long life

- Exterior cabinet is 18 gauge cold-rolled steel, powder coated for durability and a high quality appearance that resists scratches and chipping.
- 2.0" (5.1cm) thick, non-CFC, foamed-in-place polyurethane cabinet insulation provides maximum product thermal protection and increased rigidity for reliable daily use.
- Phenolic-coated evaporator protects against corrosive by-products or agents in the chamber atmosphere (e.g., secretions from insects such as flies), ensuring long life.
- Solid, stainless steel interior is more durable and corrosion-resistant than plastic or painted metal, ensuring long life and minimizing equipment costs.
- Heavy-duty, solid, stainless steel shelves are easy-to-clean, saving time and effort; more corrosion-resistant than coated wire shelves for long life; and adjustable for convenience.
- 29.0 cu. ft. models include 6 shelves that are adjustable on 3.0" (7.6cm) centers.

- 11.0 cu. ft. model includes 3 shelves that are adjustable on 2.0" (5.1cm) centers.
- Reinforced floor/shelf components for 29.0 cu. ft. models are available so you can use shakers, cell rollers, or other heavy equipment or product loads inside the chamber to meet a variety of applications.
- Swivel, locking casters ensure easy mobility during installation and cleaning. Leveling feet provide stability and added safety in the lab.

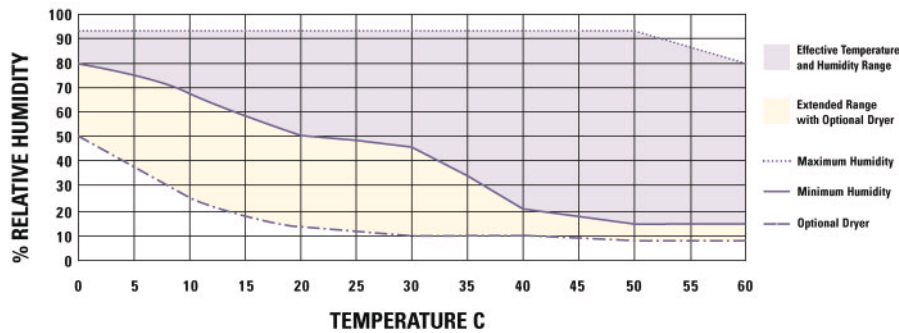
Broad range of options to create the perfect fit for your applications

Many options are available so you can tailor this series to your specific applications. Examples include access ports for probes, sensors, etc.; interior convenience receptacles; and reinforced shelving to support heavy equipment.

We also offer dehumidification and CO₂ control options to accommodate industrial, seed germination, and other biotechnological research applications. A door light package with a 24 hour on/off timer adjustable in 15 minute increments is available for Models 3920 and 3940 (3949).

Temperature/Humidity Performance Chart for Models 3940(3949) and 3911(3913)

The following chart illustrates the maximum and minimum attainable humidity within the cabinet at a given set temperature under the following nominal conditions: refrigeration on, defrost off, no wet bulb recorder, no air exchange, set for 22.2°C (72°F) and 50% RH ambient. Optional heatless dryer is available for lower humidity levels.

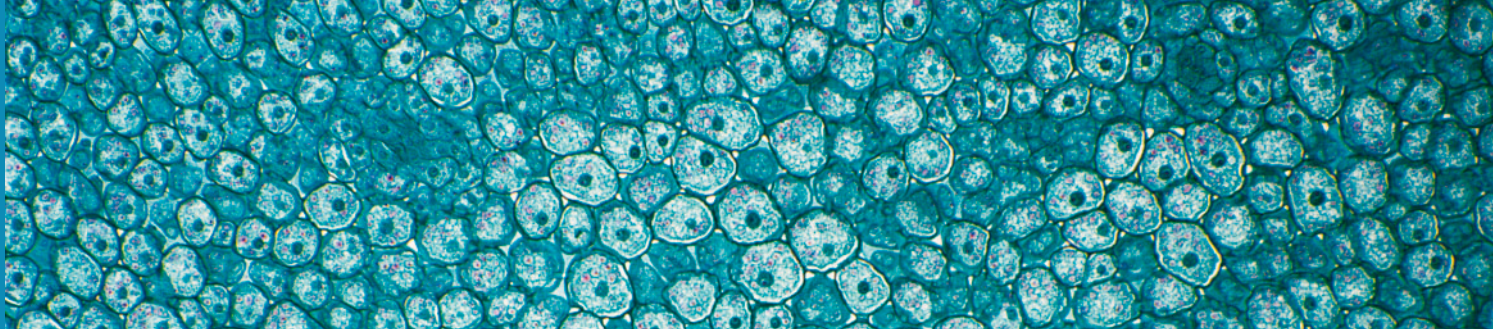


Chamber Specifications

Catalog Number	3920	3940	3949	3911	3913
Description	29 cu. ft. Incubated/Refrigerated Environmental Chamber	29 cu. ft. Incubated/Refrigerated Environmental Chamber with humidity control		11 cu. ft. Incubated/Refrigerated Environmental Chamber with humidity control	11 cu. ft. Incubated/Refrigerated Environmental Chamber with humidity control
Voltage	120V, 60 Hz	208-220V, 60 Hz	220-240V, 50/60 Hz	208-220V, 60 Hz	220-240V, 50/60 Hz
Temperature					
Control	±0.1°C @ 25°C to 37°C (77°F to 98.6°F)	±0.1°C @ 25°C to 37°C (77°F to 98.6°F)		±0.1°C @ 25°C to 37°C (77°F to 98.6°F)	
Range	0°C to 60°C (32°F to 140°F)	0°C to 60°C (32°F to 140°F)		0°C to 60°C (32°F to 140°F)	
Sensor	RTD	RTD		RTD	
Controller	Microprocessor, PID	Microprocessor, PID		Microprocessor, PID	
Programmability	Ramp & Soak (to 24 steps)	Ramp & Soak (to 24 steps)		Ramp & Soak (to 24 steps)	
Setpoint	Digital	Digital		Digital	
Display	Digital dual LED	Digital dual LED		Digital dual LED	
Readability & Setability	0.1°C	0.1°C		0.1°C	
Uniformity*	±0.3°C @ 25°C to 37°C (77°F to 98.6°F)	±0.3°C @ 25°C to 37°C (77°F to 98.6°F)		±0.3°C @ 25°C to 37°C (77°F to 98.6°F)	
Temperature Safety					
Sensor & Controller	Thermostat	Thermostat		Thermostat	
Setpoint	Analog reference dial	Analog reference dial		Analog reference dial	
Alarm	Audible/visual	Audible/visual		Audible/visual	
Refrigeration					
Compressor	¼ HP, air-cooled	¼ HP, air-cooled		¼ HP, air-cooled	
Refrigerant	Non-CFC, R134A refrigerant	Non-CFC, R134A refrigerant		Non-CFC, R134A refrigerant	
Humidity					
Input Water Quality		50K-1Megohm resistance		50K-1Megohm resistance	
Input Water Volume		1 gallon/hour		1 gallon/hour	
Input Water Pressure		Gravity to 40 psi		Gravity to 40 psi	
RH		Above ambient to 95% @ 37°C (98.6°F) ±5.0% RH		Above ambient to 95% @ 37°C (98.6°F) ±5.0% RH	
Sensor		Bulk polymer		Bulk polymer	
Controller		Microprocessor, PID		Microprocessor, PID	
Programmability		Ramp & Soak (to 24 steps)		Ramp & Soak (to 24 steps)	
Setpoint		Digital (direct set in % RH)		Digital (direct set in % RH)	
Display		Digital, dual LED (direct read in % RH)		Digital, dual LED (direct read in % RH)	
Readability & Setability		1.0%		1.0%	
Steam Generator		Initial fill approx. 1 qt. (1 liter)		Initial fill approx. 1 qt. (1 liter)	
Setable Alarm		Audible/visual		Audible/visual	

*Six shelves in Models 3920 and 3940 (3949), three shelves in Model 3911 (3913); uniformity is ±0.5°C at all other temperature parameters.

**All models require a drain unless fitted with the optional Condensate Evaporator (No. 1900031). Models 3940 (3949) and 3911 (3913) also require a constant water source.



Chamber Specifications continued

Catalog Number	3920	3940	3949	3911	3913
Fittings**					
Fill Port		1/8" female NPT		1/8" female NPT	
Drain Port (bottom)	3/8" FPT & 3/8" O.D. P-trap right rear	3/8" FPT & 3/8" O.D. P-trap right rear		3/8" FPT & 3/8" O.D. P-trap right rear	
Unit Heat Load					
115V	5500 BTUH (1600 Watts)	5500 BTUH (1600 Watts)		5500 BTUH (1600 Watts)	
220V	6000 BTUH (1750 Watts)	6000 BTUH (1750 Watts)		6000 BTUH (1750 Watts)	
Dimensions					
Exterior					
Width	38.0" (96.5cm)	38.0" (96.5cm)		38.0" (96.5cm)	
Height	88.5" (224.8cm)	88.5" (224.8cm)		51.5" (130.8cm)	
F-B	32.0" (81.3cm)	32.0" (81.3cm)		32.0" (81.3cm)	
Interior					
Width	31.0" (78.7cm)	31.0" (78.7cm)		31.0" (78.7cm)	
Height	60.0" (152.4cm)	60.0" (152.4cm)		24.0" (60.9cm)	
F-B	27.0" (68.6cm)	27.0" (68.6cm)		27.0" (68.6cm)	
Shelves					
Dimensions	30.6"W x 25.8" F-B (77.8cm x 65.6cm)	30.6"W x 25.8" F-B (77.8cm x 65.6cm)		30.6"W x 25.8" F-B (77.8cm x 65.6cm)	
Construction	Solid stainless steel, reinforced	Solid stainless steel, reinforced		Solid stainless steel, reinforced	
Surface Area per Shelf	5.4 sq. ft. (0.5 sq. m)	5.4 sq. ft. (0.5 sq. m)		5.4 sq. ft. (0.5 sq. m)	
Max. Surface Area per Chamber	104.3 sq. ft. (9.7 sq. m)	104.3 sq. ft. (9.7 sq. m)		59.4 sq. ft. (5.5 sq. m)	
Standard/Maximum Number of Shelves	6, 19	6, 19		3, 11	
Load per Shelf	35 lbs. (15.9 kg), slide in/out 50 lbs. (22.7 kg), stationary	35 lbs. (15.9 kg), slide in/out 50 lbs. (22.7 kg), stationary		35 lbs. (15.9 kg), slide in/out 50 lbs. (22.7 kg), stationary	
Construction					
Interior Volume	29.0 cu. ft. (821.2 liters)	29.0 cu. ft. (821.2 liters)		11.0 cu. ft. (311.5 liters)	
Interior Material	Type 304, 2B finish, stainless steel	Type 304, 2B finish, stainless steel		Type 304, 2B finish, stainless steel	
Exterior Material	Cold-rolled steel, powder coated	Cold-rolled steel, powder coated		Cold-rolled steel, powder coated	
Outer Door Gasket	Four-sided, vinyl compression	Four-sided, vinyl compression		Four-sided, vinyl compression	
Electrical					
	120V, 60 Hz, 16.0 Amps 3 Wire (including ground)	208-220V, 60 Hz, 15.0 Amps 4 Wire (including ground) single phase	220-240V, 50/60 Hz 14.0 Amps, 3 Wire (including ground) must be hardwired to a lockable fused disconnect switch	208-220V, 60 Hz 15.0 Amps 4 Wire (including ground) single phase	220-240V, 50/60 Hz 14.0 Amps, 3 Wire (including ground) must be hardwired to a lockable fused disconnect switch
Dry Contacts	Common, NO, NC	Common, NO, NC		Common, NO, NC	
Data Output	4-20 milliamp, temperature	4-20 milliamp, temperature and RH		4-20 milliamp, temperature and RH	
Power Switch	1 Pole	1 Pole		1 Pole	
Plug	NEMA 5-20P	NEMA 14-20P	None	NEMA 14-20P	None
Weight					
Net	700 lbs. (317.5 kg)	765 lbs. (347.0 kg)		575 lbs. (260.8 kg)	
Shipping (motor)	850 lbs. (385.6 kg)	1,040 lbs. (471.7 kg)	940 lbs. (426.4 kg)	715 lbs. (324.3 kg)	

Incubator/environmental chamber for elevated temperature applications

The 29.0 cu. ft. (821.2 liters) Model 3960 (3961) offers precise temperature control in a range of 5°C above ambient to 60°C (140°F), making this unit ideal for clinical applications, elevated temperature stability studies, and shelf life testing.

MODEL 3960 (3961)

- Large size for high volumes and a broad range of products
- Heated glass door for minimal condensation and a clear view
- Interior and exterior convenience receptacles, and five adjustable shelves
- Thermo Scientific Enviro-Scan controls with easy-to-read display of actual temp



MODEL 3961

Optimum Uniformity and an Elevated Temperature Range for Easy Compliance with Regulatory Requirements

Our directed airflow system promotes an ideal growth environment. The proven design includes a positive pressure feed plenum and a negative pressure return plenum. This combination directs air across the surface of each solid shelf. Even when filled with samples or equipment, each shelf receives a consistent flow of conditioned air for optimum temperature uniformity and recovery. By design, the feed plenum cannot be blocked by the chamber's contents. (Refer to the diagram on page 3.)



- Intuitive, powerful Enviro-Scan[®], which is common to other Forma[®] products,
 - ensures precise temperature control without complicated programming
 - provides audible/visual under-temperature and over-temperature alarms for peace-of-mind
 - includes an easy-to-read display for convenient, continuous monitoring.
- Enviro-Scan operating modes include Run, Setpoint, Calibration, and System Configuration.
- Standard remote alarm contacts and available data outputs allow connection to an in-house monitor/alarm system to track chamber conditions, helping you meet internal and regulatory documentation requirements. Chart recorders are available.

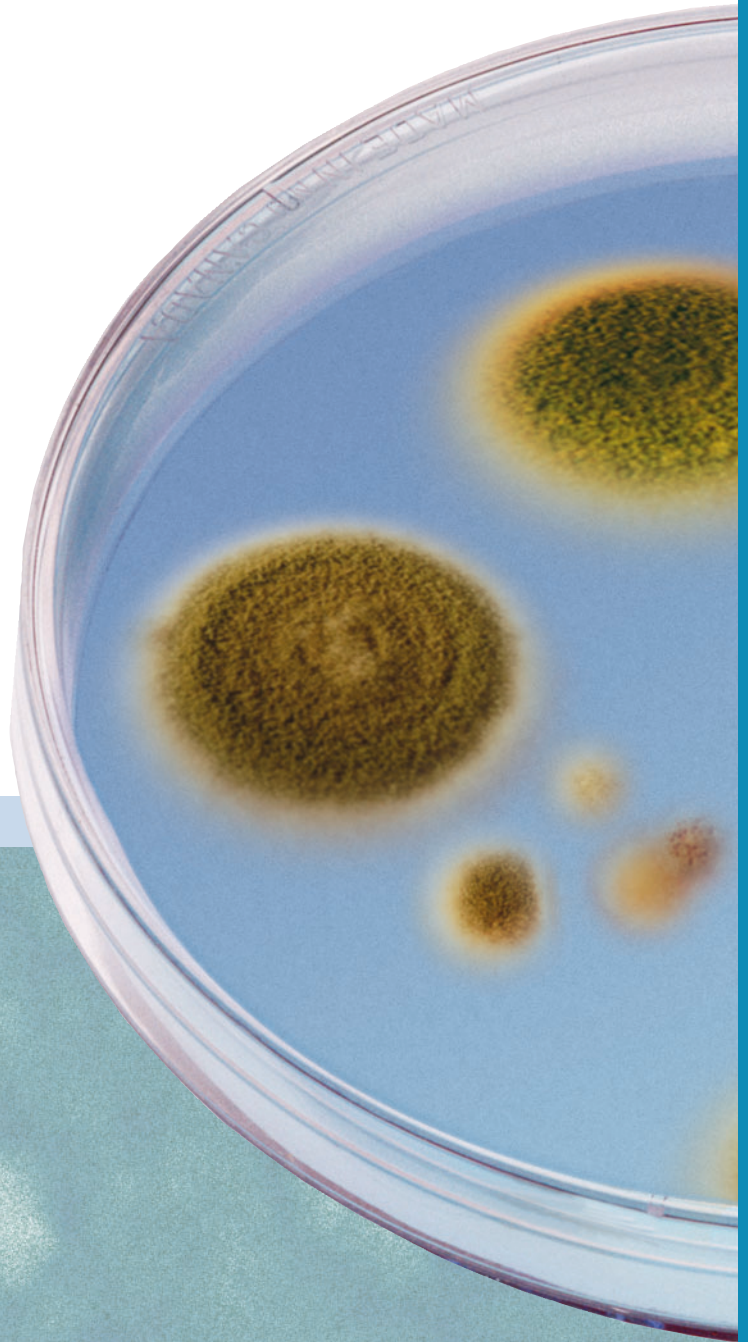
Durable construction and shelving for long life

- Exterior cabinet is 18 gauge cold-rolled steel, powder coated for durability and a high quality appearance that resists scratches and chipping.
- Maximum product thermal protection and added cabinet strength for reliable daily use are provided by the 2.0" (5.1cm) thick fiberglass cabinet insulation.
- Solid, stainless steel interior is more durable and corrosion-resistant than plastic or painted metal, ensuring long life and minimizing equipment costs.
- Five heavy-duty, solid, stainless steel shelves, adjustable on 2.0" (5.1cm) centers, are easy-to-clean, saving time and effort; more corrosion-resistant than coated wire shelves for long life; and adjustable for convenience.
- Reinforced floor/shelf components are available so you can use shakers, cell rollers, or other heavy equipment or product loads inside the chamber to meet a variety of applications.

Valuable features included for cost-effectiveness and flexibility

Casters, access ports, convenience receptacles, heated glass door, and remote alarm contacts—all are included up-front. Our Model 3960 (3961) Incubator/Environmental Chamber is prepared to meet your changing application needs without the added cost of expensive add-on options.

- Swivel, locking casters ensure easy mobility during installation and cleaning. Leveling feet provide stability and added safety in the lab.
- Thru-wall access ports, located on the right and left sides of the chamber, make it possible to add probes, sensors, etc. without altering the cabinet.
- Interior and exterior accessory receptacles provide a convenient power source.
 - Interior GFCI duplex receptacle on the 115V Model 3960 (single European 230V CEE 7 on Model 3961), located in the upper right corner of the rear wall, permits the use of shakers, cell rollers, and other equipment inside the chamber, eliminating the inconvenience of an extra external power strip.
 - Exterior receptacle, located on the upper-right side of the control panel, is available for connecting an optional recorder or other equipment.



Chamber Specifications

Catalog Number	3960	3961
Description	29 cu. ft. Incubated Environmental Chamber	29 cu. ft. Incubated Environmental Chamber
Voltage	115V, 50/60 Hz	200-230V, 50/60 Hz
Temperature		
Control	±0.1°C	±0.1°C
Range	5°C above ambient to 60°C (140°F)	5°C above ambient to 60°C (140°F)
Uniformity	±0.4°C @ 30°C (86°F) ±0.3°C @ 37°C (98.6°F) ±0.5°C @ 45°C (113°F)	±0.4°C @ 30°C (86°F) ±0.3°C @ 37°C (98.6°F) ±0.5°C @ 45°C (113°F)
Low Alarm	User programmable and indicator	User programmable and indicator
Over-temperature		
Sensor	Precision thermistor	Precision thermistor
Setability	0.1°C	0.1°C
Function	User programmable, action (shuts off heat), and indicator	User programmable, action (shuts off heat), and indicator
Temperature Safety (Cabinet)		
Sensor	Independent thermostat	Independent thermostat
Type	Independent analog electronic	Independent analog electronic
Fittings		
Access Port With Stopper	2.4" (6.1cm) I.D., one on each side	2.4" (6.1cm) I.D., one on each side
Unit Heat Load		
115V/230V	510 BTUH (150 Watts) 129 kcal per hour	510 BTUH (150 Watts) 129 kcal per hour
Shelves		
Dimensions	30.6"W x 25.8"F-B (77.7cm x 65.5cm)	30.6"W x 25.8"F-B (77.7cm x 65.5cm)
Construction	2B finish, solid stainless steel	2B finish, solid stainless steel
Surface Area	5.4 sq. ft. (0.5 sq. m) per shelf	5.4 sq. ft. (0.5 sq. m) per shelf
Max. per Chamber	140.4 sq. ft. (13.0 sq. m)	140.4 sq. ft. (13.0 sq. m)
Standard/Maximum No. of Shelves	5, 26	5, 26
Loading	30 lbs. (13.6 kg) per shelf, fully inserted and stationary; not to exceed 300 lbs. (136.0 kg) total per cabinet	30 lbs. (13.6 kg) per shelf, fully inserted and stationary; not to exceed 300 lbs. (136.0 kg) total per cabinet
Construction		
Interior Volume	29.0 cu. ft. (821.2 liters)	29.0 cu. ft. (821.2 liters)
Interior Material	Type 304, 2B finish, stainless steel	Type 304, 2B finish, stainless steel
Exterior Material	Cold-rolled steel, powder coated	Cold-rolled steel, powder coated
Insulation	2.0" (5.1cm) fiberglass	2.0" (5.1cm) fiberglass
Exterior Door	Heated, triple pane, tempered glass	Heated, triple pane, tempered glass
Outer Door Gasket	Molded vinyl	Molded vinyl
Electrical		
	115V, 50/60 Hz, 9.0 Amps (Operating range 90-125V includes voltage fluctuations)	200/230V, 50/60 Hz, 5.0 Amps (Operating range 180-250V includes voltage fluctuations)
Circuit Breaker/Power Switch	15 Amps; 2 pole	8 Amps; 2 pole
Exterior Convenience Receptacle	75 Watts maximum (matches cabinet voltage)	75 Watts maximum (matches cabinet voltage)
Interior Convenience Receptacle	230 Watts maximum (matches cabinet voltage)	230 Watts maximum (matches cabinet voltage)
Plug	115V: NEMA 5-15P Plug	230V: CEE 7/7 Plug
Alarm Contacts	Temperature deviation and power failure; Common, NO, and NC; customer connections through RJ11 jack on rear of unit	Temperature deviation and power failure; Common, NO, and NC; customer connections through RJ11 jack on rear of unit
Data Outputs (opt.)	RS-485, 0-1V, 0-5V, 4-20 milliamp	RS-485, 0-1V, 0-5V, 4-20 milliamp
Dimensions		
Exterior	38.0"W x 80.0"H x 33.0"F-B (96.5cm x 203.2cm x 83.8cm)	38.0"W x 80.0"H x 33.0"F-B (96.5cm x 203.2cm x 83.8cm)
Interior	31.0"W x 60.0"H x 27.0"F-B (78.7cm x 152.4cm x 68.6cm)	31.0"W x 60.0"H x 27.0"F-B (78.7cm x 152.4cm x 68.6cm)
Weight		
Net	500 lbs. (226.8 kg)	500 lbs. (226.8 kg)
Shipping (motor)	660 lbs. (299.4 kg)	660 lbs. (299.4 kg)

Specifications are based on nominal voltages of 115V or 230V in ambients of 22°C to 25°C. Performance is plus or minus the least significant digit unless otherwise specified. Model 3960 (3961) is UL Listed to United States and Canadian requirements and bears the CE Mark.



Accessories (All are customer installed unless indicated otherwise)

Catalog No.	Description	Catalog No.	Description
Shelving		Chart Recorders and Paper	
	Stainless Steel Shelves for Models 3920, 3940 (3949), 3911 (3913), and 3960 (3961)		12", 6 Hour to 31 Day Digital Recorders for Models 3920, 3940 (3949), and 3911 (3913); draw own chart as they record; single or dual pen; 120V, 50/60 Hz; factory installed
224139	Solid Stainless Steel Shelf and Channels for Models 3920, 3940 (3949), 3911 (3913), and 3960 (3961)	198036	Left Side
224155	Perforated Stainless Steel Shelf and Channels for Models 3920, 3940 (3949), 3911 (3913), and 3960 (3961)	198039	Right Side
224161	Reinforced Stainless Steel Shelf and Channels for Models 3920, 3940 (3949), 3911 (3913), and 3960 (3961); two per unit max., not for shakers; 150 lb. (68.0 kg) load maximum with shelf fully inserted and stationary	198042	Top, adds 20.3" (51.6cm) to cabinet height
	Shaker Support System, factory installed	197054	Replacement Chart Paper, 100 per box
1900005*	Two shelf shaker support system without duplex outlet, each shelf will hold 200 lbs., for Models 3920, 3940, (3949) and 3960 (3961) Must be ordered with duplex outlet (505099 or 505094)		6", 7 Day Chart Recorders for Models 3920, 3940 (3949), and 3911 (3913); 0C to 60C (32F to 140F); 115V, 50/60 Hz
190761	Three shelf shaker support system includes duplex outlet, each shelf will hold 200 lbs., for Models 3920, 3940, (3949) and 3960 (3961)	201144	Single Pen, factory installed
	Door Options	201145	Single Pen
190239	Lexan® Inner Door Kit (five doors) for Models 3920, 3940 (3949), and 3960 (3961); factory installed	201146	Dual Pen, factory installed
190514	Door Lock Assembly for Models 3920, 3940 (3949), and 3960 (3961); factory installed	201147	Dual Pen
190597	Left-Hand Door Swing Kit for Models 3920 and 3940 (3949); factory installed		6", 7 Day Chart Recorders for Model 3960 (3961), 0C to 60C (32F to 140F), single pen
	Stainless Steel Door Glass Covers	201155	115V, 50/60 Hz
190591	For Models 3920, 3940 (3949), and 3960 (3961); factory installed	201156	230V, 50/60 Hz
190892	For Models 3920, 3940 (3949), and 3960 (3961)**		6" Chart Paper for Recorders, 50 per box
	Door Light Package, factory installed	180006	For Single Pen, 0°C to 60°C (32°F to 140°F)
190032	Door light package with 8 lights for plant growth, seed germination, algae, small animal and insect studies 120V, 50/60 Hz for Models 3920, 3940 (3949) and 3960 (3961)	197030	For Single Pen, -10°C to 70°C (14°F to 158°F)
	Reinforced Floor Options	197075	For Single or Dual Pen, 0°C to 100°C (32°F to 212°F)
500182***	Reinforced Floor with Removable Ramp for Models 3920, 3940 (3949), and 3960 (3961); accommodates a cell roller		RH System Options
190777***	Same as No. 500182 but factory installed	184062	Condensate Pump Kit for Model 3920, 3940 (3949), and 3911 (3913) Elevated Drains; includes separate line cord, 115V
	Access Ports, factory installed	1900031	Condensate Evaporator for Models 3920, 3940, and 3911; includes separate line cord; 115V
193004	2" nominal ID port with cover	1900391	Condensate Evaporator for Models 3949 and 3913; includes separate line cord; 240V
193005	5" nominal ID port with cover	1900139	Heatless Dryer Kit for Models 3940 (3949) and 3911 (3913), for sub-ambient chamber RH, factory installed
193006	6" nominal ID port with cover		Calibration Certificate and Temperature Mapping with Report
	Compressed Dry Air System, factory installed	260045	Temperature Mapping Report (factory installed)
1900139	Heatless dryer for low ambient humidity conditions for Models 3911 (3913), 3920 and 3940 (3949) Requires 90 PSI at 13 CFM compressor minimum (see temperature/humidity chart on page 5)	260049	Calibration Certificate (specify test parameters)
	Convenience Receptacles, factory installed		cGxP Protocols and on site Validation Services****
505099	Duplex Receptacle Kits		GLP Level Protocols (IQ OQ)
505094	120V (includes separate line cord) for Models 3920, 3940, and 3911; located on center rear wall	IOQDOCE89003499	For models 3920, 3960
	Data Outputs (select one) for Model 3960 (3961), factory installed	IOQDOCE89003710	For models 3940 (3949) 3911 (3913)
190523	RS-485 interface (compatible with Model 1535 Monitor/Alarm only)		GMP Level Protocols (IQ OQ PQ)
190512	4-20 milliamp	IOQPDOCE89003499	For models 3920, 3960
190543	0-5V	IOQPDOCE89003710	For models 3940 (3949) 3911 (3913)
190544	0-1V		GLP Level Field Validation (IQ OQ) Performed at the customer site (protocol included at no extra charge)
	Monitor/Alarm and Sensaphone® for Model 3960 (3961)	IOQPCKE89003499	For models 3920, 3960
1535	Monitor/Alarm System, interfaces with as many as 24 products (channels) to monitor and display equipment conditions up to 2,000 ft. away	IOQPCKE89003710	For models 3940 (3949) 3911 (3913)
	Sensaphone Telephone Dialing Systems, interface with standard touch-tone phone		GMP Level Field Validation (IQ OQ PQ) Performed at the customer site (protocol included at no extra charge)
400047	For up to four input channels	IOQPCKE89003499	For models 3920, 3960
400134	For up to eight input channels	IOQPCKE89003710	For models 3940 (3949) 3911 (3913)
			Miscellaneous Accessories
			Thru-Wall Access Ports, factory installed
		190164	Port for Model 3960 (3961), 2.4" (6.1cm) I.D., customer-specified location
		505101	Port for Models 3920, 3940 (3949), and 3911 (3913); 1.5" (3.8cm) I.D.; on center right wall
			Infrared CO₂ Control Packages, factory installed
		1900226	For Model 3920
		1900227	For Models 3940 (3949) and 3911 (3913)

Warranty

We confidently back our environmental chambers with a full one year parts and labor warranty.

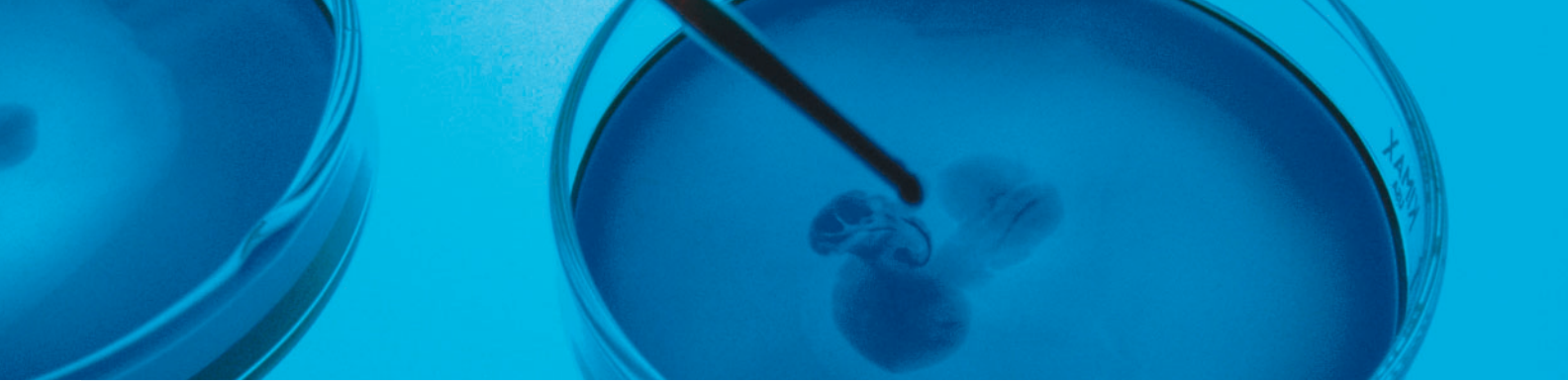
*Rubber isolators replace casters for maximum stability.

**Must be installed by qualified personnel.

***Ramp extends approximately 23.0" (58.4cm) in front of the chamber.

****Specification sheets for protocol and field validations are available for review upon request by calling Pre-Sales at 866-984-3766 or emailing:

LPG.presales@thermofisher.com.



About Thermo Fisher Scientific

Thermo Fisher Scientific Inc. (NYSE: TMO) is the world leader in serving science, enabling our customers to make the world healthier, cleaner and safer. With annual revenues of \$10 billion, we have more than 30,000 employees and serve over 350,000 customers within pharmaceutical and biotech companies, hospitals and clinical diagnostic labs, universities, research institutions and government agencies, as well as environmental and industrial process control settings. Serving customers through two premier brands, Thermo Scientific and Fisher Scientific, we help solve analytical challenges from routine testing to complex research and discovery. Thermo Scientific offers customers a complete range of high-end analytical instruments as well as laboratory equipment, software, services, consumables and reagents to enable integrated laboratory workflow solutions. Fisher Scientific provides a complete portfolio of laboratory equipment, chemicals, supplies and services used in healthcare, scientific research, safety and education. Together, we offer the most convenient purchasing options to customers and continuously advance our technologies to accelerate the pace of scientific discovery, enhance value for customers and fuel growth for shareholders and employees alike. Visit www.thermofisher.com.

© 2008 Thermo Fisher Scientific Inc. All rights reserved. Sensaphone is a registered trademark of the Sensaphone Company. Lexan is a registered trademark of the General Electric Company. All other trademarks are the property of Thermo Fisher Scientific, Inc. and its subsidiaries. Specifications, terms and pricing are subject to change. Not all products are available in all countries. Please consult your local sales representative for details.

North America: USA/Canada +1 866 984 3766 (866-9-THERMO)

Europe: Austria +43 1 801 40 0, Belgium +32 2 482 30 30, France +33 2 2803 2180, Germany national toll free 08001-536 376, Germany international +49 6184 90 6940, Italy +39 02 02 95059 434-254-375, Netherlands +31 76 571 4440, Nordic/Baltic countries +358 9 329 100, Russia/CIS +7 (812) 703 42 15, Spain/Portugal +34 93 223 09 18, Switzerland +41 44 454 12 12, UK/Ireland +44 870 609 9203

Asia: China +86 21 6865 4588 or +86 10 8419 3588, India toll free 1800 22 8374, India +91 22 6716 2200, Japan +81 45 453 9220, Other Asian countries +852 2885 4613

Countries not listed: +49 6184 90 6940 or +33 2 2803 2180

www.thermo.com/chambers