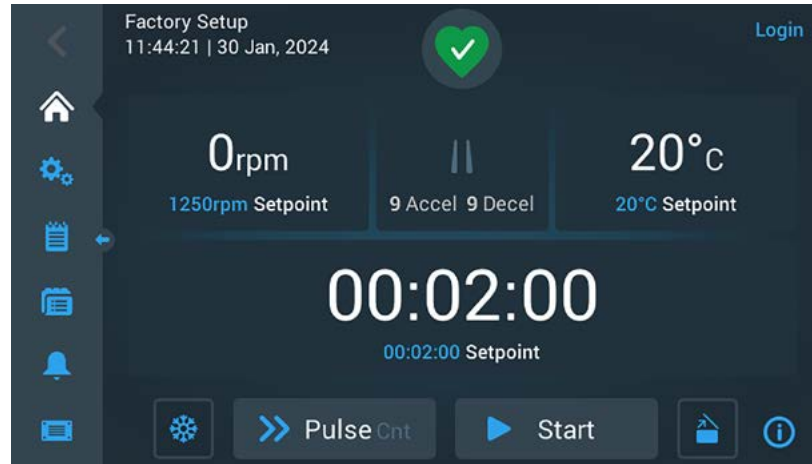


General Purpose X Pro Centrifuge Series

Quick start guide

Initial start up

Plug the Thermo Scientific™ Multifuge™ X Pro or Sorvall™ X Pro Centrifuge into the power outlet, making sure that the supply voltage matches the data plate. When the centrifuge is powered up, the Thermo Scientific logo will be displayed for 25 seconds. Then, the start up wizard will provide guidance.



Home screen

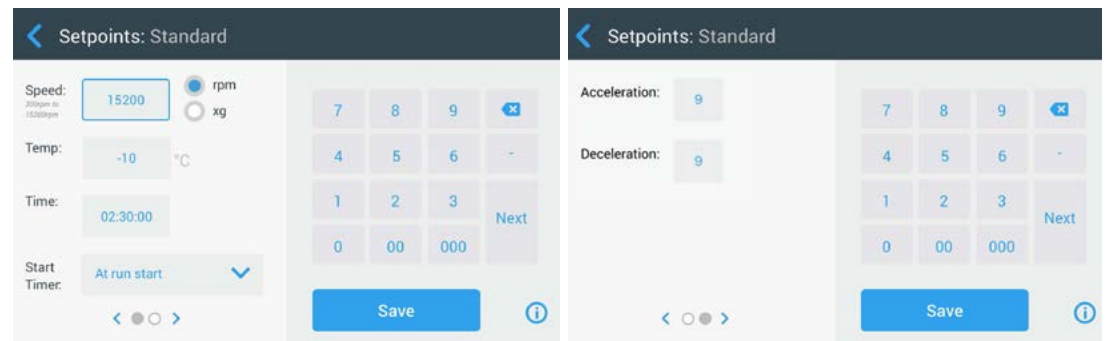
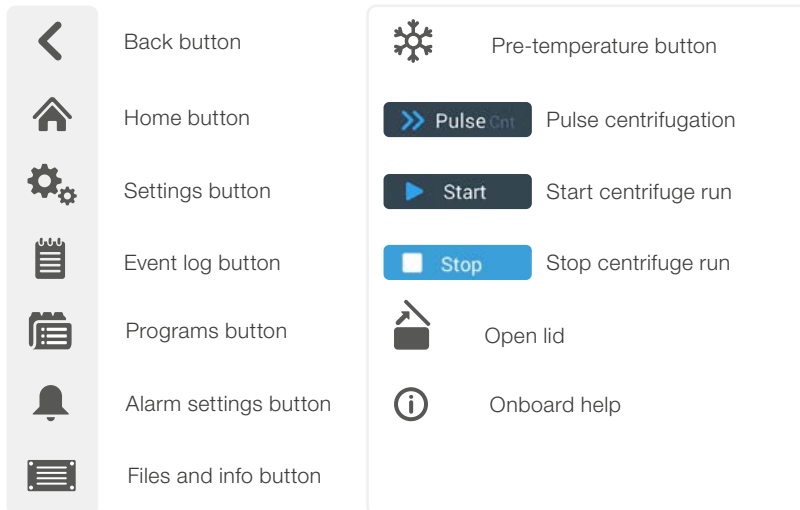
The 'Home Screen' is the default screen for all routine centrifuge operations. It has touch-sensitive fields and buttons for setting centrifuge run protocols, opening the lid, starting and stopping the centrifuge.

Health status



Setting centrifuge run parameters

To set desired centrifuge run parameters, simply press the parameter area of the touchscreen. The setpoints screen will appear. Press the field to be changed to highlight and use the keypad to enter a new value. Save the value by pressing the 'Save' button.



For technical specifications, safety instructions including warnings and conditions for a safe usage, please refer to the user manual on thermofisher.com

Thermo Scientific™ Auto-Lock™ Rotor Exchange



Installation

1. Place the rotor over the centrifuge spindle and let it slide slowly down the centrifuge spindle.
2. Rotor will click automatically into place.
3. Check if the rotor is properly installed by lifting it slightly on the handle.

Removal

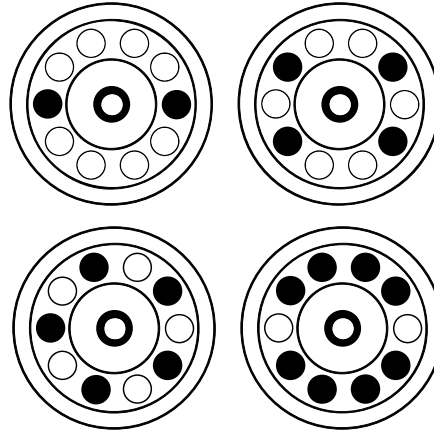
4. Remove samples, adapters and buckets from the rotor.
5. Grasp the rotor handle with both hands.
6. Press the Auto-Lock key and, at the same time, pull the rotor directly upwards and away from the drive shaft with both hands.

Thermo Electron LED GmbH

Zweigniederlassung Osterode
Am Kalkberg, 37520 Osterode am Harz
Germany

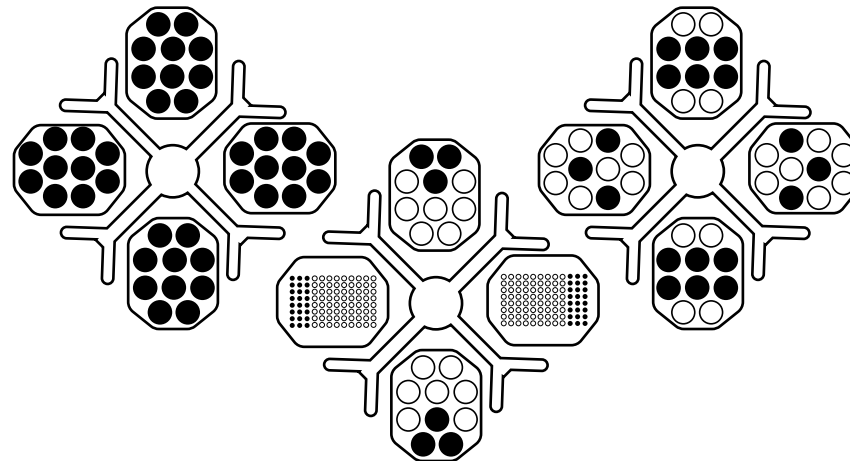
Balance loading

Correct loading examples for fixed angle rotors

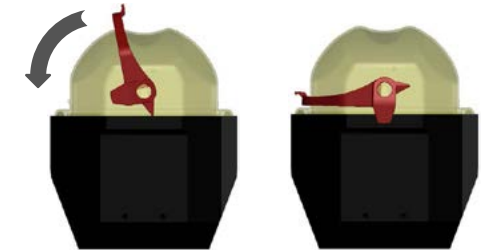


1. Load the rotor compartments evenly by balancing opposite loads.
2. When using swinging bucket rotors, remember to:
 - Weigh the bucket contents (adapter and tube).
 - Install all buckets on the rotor properly and ensure they move freely.
 - Install an identical bucket type in the opposite positions.

Correct loading examples for swinging-bucket rotors

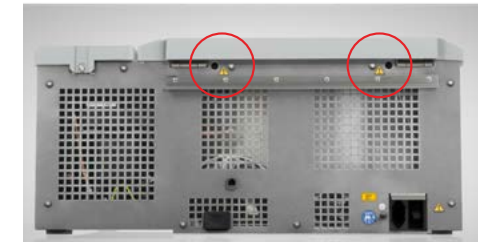


Thermo Scientific™ ClickSeal™ Biocontainment Lids



1. Raise the red latch and position the lid onto the bucket.
2. Lower the red latch until it clicks into place.
3. Check that both sides of the red latch are engaged on the bucket.

Emergency door release



1. Wait until the rotor has stopped.
2. Pull out the power supply plug.
3. Locate the two plastic plugs (highlighted in red) on the rear of the centrifuge.
4. Pry out plugs and pull the attached cords.
5. The centrifuge lid will pop open.
6. Reinstall cords and plugs.

For technical specifications, safety instructions including warnings and conditions for a safe usage, please refer to the user manual on thermofisher.com

Learn more at thermofisher.com/centrifuges

The intended use of the products mentioned in this document varies. Please refer to the product label. It is the customer's responsibility to ensure that the performance of the product is suitable for customers' specific uses or applications. © 2024 Thermo Fisher Scientific Inc. All rights reserved. All trademarks are the property of Thermo Fisher Scientific and its subsidiaries unless otherwise specified. FLY-9446534 1224