

## Optimization of a bulk reagent liquid handler for low volume dispensing

### Author Details

Sini Suomalainen, Heikki Oranen, Ari Kukkonen, and Merja Mehto

Thermo Fisher Scientific

Vantaa, Finland



### Introduction

This technical note describes the performance of Thermo Scientific™ Multidrop™ Combi nL Reagent Dispenser in low volume dispensing and the operating principle of the valves. Multidrop Combi nL helps provide consistent, high-throughput dispensing into 1536-, 384-, and 96-well microplates covering the volume range 50 nL to 50 µL. In this experiment, liquids with different surface tension properties were tested by dispensing multiple volumes into 1536- and 384-well plates. Descriptions of the liquid calibration and the valve correction feature with the Thermo Scientific™ FILLit™ Software are also presented.

### Functional operation of the valve

Unlike other Multidrop dispensers, Multidrop Combi nL uses valves and a pressurized reagent container for liquid flow. When the valve is closed, the ruby closing ball is pressed into the sapphire seat. By applying current, the ruby ball moves to open the valve (Figure 1). The dispensing volume is based on the duration of the opening pulse and depends on the loading pressure at the reagent reservoir. The pressure system can also produce a vacuum, which is used for the backflush of reagents.

There are eight microsolenoid dispensing valves inserted into the dispensing valve head of the Multidrop Combi nL. The valves operate separately, and it is possible to replace an individual valve instead of the whole dispensing head, if needed. Replacing the dispensing valve is easy and there is no need for recalibration after the replacement, because the valve performance goes through the performance inspection.

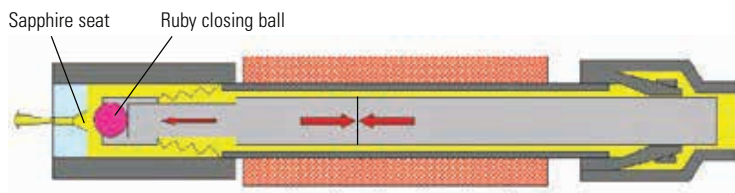


Figure 1. The microsolenoid valve open.



Figure 2. Eight dispensing valves inserted into the manifold.

## Dispensing and calibration of various liquids

Multidrop Combi nL is designed for dispensing of all kinds of liquids. The tubing is made of tygon to reach the maximum resistance to the chemicals. Besides excellent durability and exceptional smooth inner surface, tygon is inert material for flexible tubing.

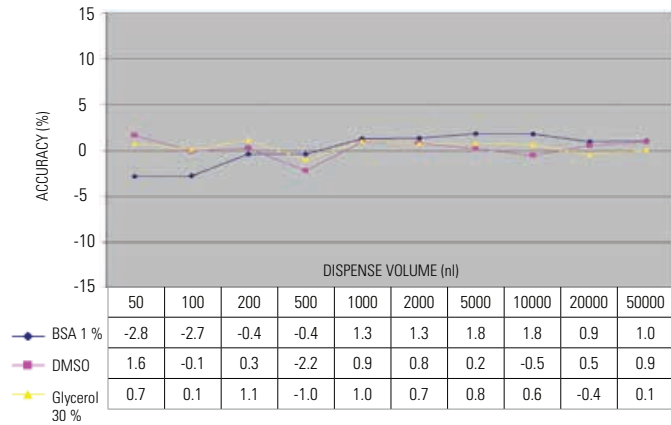


Figure 3. The accuracy of dispensing of different liquids.

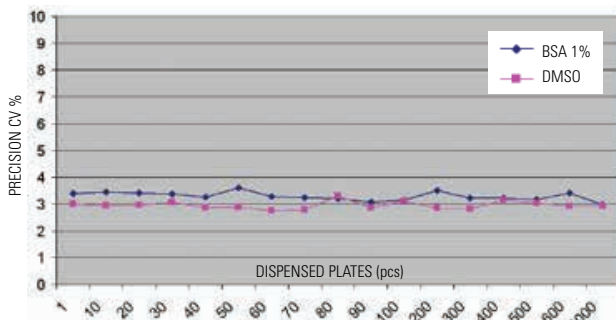


Figure 4a. The reproducibility of dispensing 500 nL of BSA 1% and DMSO to 384 plates (100 pcs.).

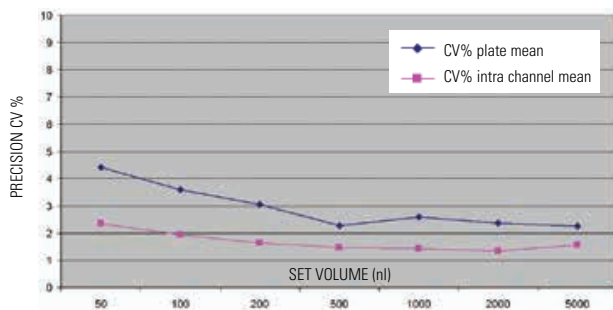


Figure 4b. Precision of dispensing Tris-Saline (pH 8.0) buffer to 1536 plates.

## Performance of Multidrop Combi nL

Dispensing liquids with different viscosities and surface tension properties were tested to estimate the performance of Multidrop Combi nL. Multiple volumes of various liquids were dispensed into 1536- and 384-round well plates to evaluate the accuracy and precision of the dispensing. Factory settings for different liquids were used for dispensing speed. Reproducibility was tested by dispensing 50–50000 nL of 0.04 mM fluorescein in 1% BSA, 30% glycerol, and DMSO to 384-well plates. The filling was done for the whole plate, and the test was repeated twice with every volume used. After dispensing of different liquids with fluorescein, 10–50  $\mu$ L Tris-Saline (pH 8.0) buffer was added to the plates.

The volume of Tris-Saline depended on the volume of dispensed liquid, 50  $\mu$ L for 50–5000 nL, 40  $\mu$ L for 10000 nL, 30  $\mu$ L for 20000 nL, and 10  $\mu$ L for 50000 nL. After centrifugation and shaking, the plates were measured in Thermo Scientific™ Varioskan™ ex/em 485/518 nm. The internal software Liquid Factor function was used to measure the accuracy of dispensing all liquids with every volume. The liquid factor was calculated by weighing the liquid dispensed into the 1x8 strip and compared this to the expected volume to be dispensed (Figure 3).

## Reliability of dispensing

The reproducibility test was done by dispensing 0.04 mM fluorescein in water to 384-well plates. The dispensing of 100 nL into 4300 plates was performed within two days to test the effect on the accuracy. The tubing was emptied for the night; it was then filled and primed to continue dispensing with the same parameters in the morning. There were no peaks or empty wells detected during the dispensing run across 4300 plates using 100 nL of water. The repeatability test was also done with 500 nL of 0.04 mM fluorescein in DMSO (1000 plates), 1% BSA (1320 plates) (Figure 4a).

## Calibration

Because of the different densities that affect the movement of the liquid, the calibrations are needed to ensure that the instrument dispenses the set volume accurately. The Multidrop Combi nL has five calibrated liquids in store: water, DMSO, 1% BSA, methanol, and 30% glycerol; furthermore, with the Multidrop FILLit Software, it is straightforward to calibrate a new liquid to the instrument. Calibration creates a calibration curve for the combination of liquid and speed. The curve contains a series of five calibration points, each of which consists of a volume/time pair (Figure 5).

It is possible to compensate the dispensing volume of a single valve with the valve correction feature of the FILLit Software (Figure 6). All eight valves are set to function similarly, but they are individual and function separately. If some of the valves are consistently dispensing other than the set volume, there is a possibility to enter a correction factor in percentage for each valve.

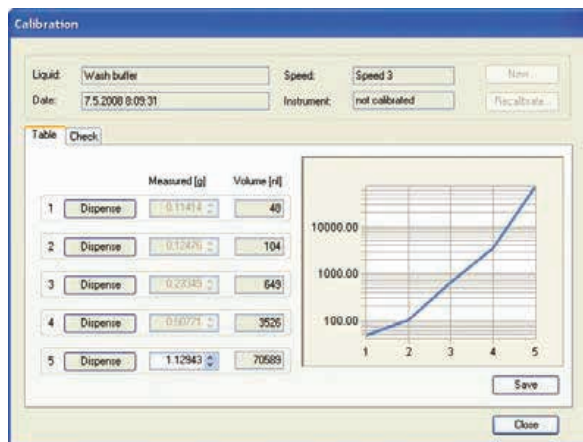


Figure 5. Five-point calibration.

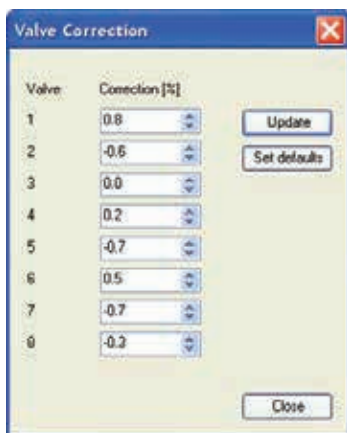


Figure 6. Valve correction feature.



Figure 7. Reagents dispensed successfully on top of monolayer CHO cells.

### Dispensing of cells and cell culture media

Because of the characteristics of the instrument, Multidrop Combi nL can be used to dispense cells, culture media, and beads. The dispensing of cell culture medium was tested with DMEM and 10% FBS. There was a comparison of two different dispensing heights, 11 and 16 mm, and all 5 different dispensing speeds to 384-well plates. Some frothing was seen in some of the wells of the 16 mm dispensing height, but that was minimized with the lower dispensing height and the highest dispensing speed. Different cell lines, e.g., CHO and HEK 293, have been successfully dispensed with Multidrop Combi nL and the monolayer cells remain undisturbed after dispensing liquids on top of them (Figure 7).

### Conclusion

The precision and accuracy test results of Multidrop Combi nL show reliability, reproducibility, and flexibility of dispensing small volumes of liquids with different viscosities and surface tension properties. It has also been successfully used for dispensing of living cells and cell culture media.

The pressurized reagent container with valves enables accurately controlled liquid flow at all volumes, and the dispensing reliability of Multidrop Combi nL has shown to be very high in dispensing tests. With the Multidrop FILLit Software, the instrument can calibrate the valve open times for different liquids, and the possibility of single valve correction supplements the five-point calibration to achieve optimal dispensing results.

### Contact us

#### North America:

USA / Canada +1 866 984 3766

#### Europe:

Austria +43 1 801 40 0  
 Belgium +32 2 482 30 30  
 France +33 2 2803 2000  
 Germany national toll free 08001-536 376  
 Germany international +49 6184 90 6940  
 Italy +39 02 02 95059 434-254  
 Netherlands +31 76 571 4440  
 Nordic countries +358 9 329 100  
 Russia/CIS +7 (812) 703 42 15  
 Spain/Portugal +34 93 223 09 18  
 Switzerland +41 44 454 12 12  
 UK/Ireland +44 870 609 9203

#### Asia:

China +86 21 6865 4588 or  
 +86 10 8419 3588  
 India +91 22 6716 2200  
 Japan +81 45 453 9220  
 Other Asian countries +852 2885 4613  
 Countries not listed: +49 6184 90 6940 or  
 +33 2 2803 2000

**In addition to these offices, Thermo Fisher Scientific maintains a network of representative organizations throughout the world.**

Learn more at [thermofisher.com](http://thermofisher.com)