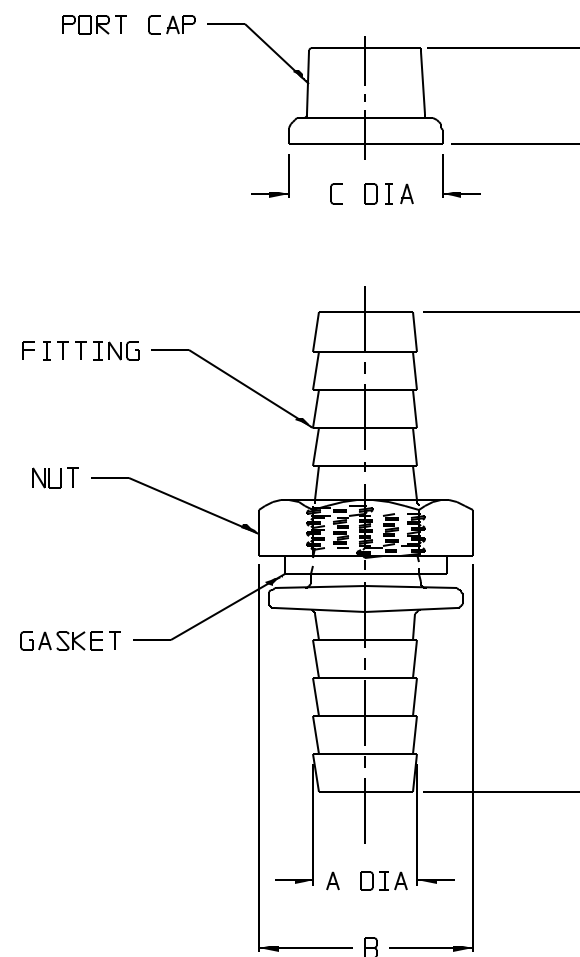


|   |            |           |            |           |
|---|------------|-----------|------------|-----------|
| CATALOG NUMBER.....:                              | 6149-0001  |           | 6149-0002  |           |
| FITS TUBING W/ ID (IN.).....:                     | 1/2        |           | 1/4        |           |
| NOM. WT. (gms) EACH FITTING ASSEMBLY W/ CAP.....: | 10.3       |           | 3.5        |           |
|   | INCH       | MM        | INCH       | MM        |
| A DIA.....:                                       | 0.54 ±0.01 | 13.7 ±0.3 | 0.29 ±0.03 | 7.4 ±0.3  |
| B (NUT WIDTH ACROSS FLATS):::                     | 0.97 ±0.02 | 24.6 ±0.5 | 0.55 ±0.02 | 14.0 ±0.5 |
| C (CAP DIA.).....:                                | 2.50 ±0.03 | 63.5 ±0.8 | 2.20 ±0.03 | 55.9 ±0.8 |
| D (CAP HT.).....:                                 | 0.80 ±0.02 | 20.3 ±0.5 | 0.55 ±0.02 | 14.0 ±0.5 |
| H (FITTING HEIGHT).....:                          | 0.50 ±0.02 | 12.7 ±0.5 | 0.43 ±0.02 | 10.9 ±0.5 |

| MATERIALS |          |
|-----------|----------|
| FITTING   | PP       |
| GASKET    | SILICONE |
| NUT       | ACETAL   |
| PORT CAP  | TPE      |



SPECS ON BACK

NOT TO SCALE

NOTES:

1. ALL DIMENSIONS ARE NOMINAL AND IN INCHES AND MILLIMETERS UNLESS OTHERWISE NOTED.
2. THIS IS NOT A PRODUCTION DRAWING, BUT IS FOR INFORMATIONAL PURPOSES ONLY, AND IS SUBJECT TO CHANGE WITHOUT NOTICE.

CONFIDENTIAL

THIS PRODUCT SPECIFICATION SHEET CONTAINS CONFIDENTIAL AND/OR PROPRIETARY INFORMATION AND IS TO BE USED ONLY FOR THE EXPRESSED PURPOSES AGREED UPON BY AN AUTHORIZED OFFICER OF THERMO FISHER SCIENTIFIC.

**ThermoFisher**  
SCIENTIFIC

Thermo Fisher Scientific  
75 Panorama Creek Drive  
Rochester, NY 14625-2385, USA

|      |     |       |         |                  |      |
|------|-----|-------|---------|------------------|------|
| MADE | MC  | APP'D | PVC     | PSS 00-6149-000X | REV. |
| CK'D | PVC |       | 3/20/98 |                  | 0398 |

DESCRIPTION:

BARBED BULKHEAD FITTINGS